




COMPANY PROFILE

Copyright © 2025.
All rights reserved



SCAN ME!

 www.futu1.com.vn



Company Information

NAME IN VIETNAMESE	CÔNG TY CỔ PHẦN PHỤ TÙNG MÁY SỐ 1
NAME IN ENGLISH	MACHINERY SPARE PARTS NO.1 JOINT STOCK COMPANY
SHORT NAME	FUTU1
ESTABLISHMENT DATE	25/3/1968
CHAIRMAN OF THE BOD	MR. NGO VAN THAI
DIRECTOR	MR. TRAN DUC HUNG
NUMBER OF EMPLOYEES	1100



Registered capital

3.2 million USD



Total Area

130.000 m²

Workshop Area **80.000 m²**



Headquarters

3/2 street, Group 10, Ba Xuyen Ward,
Thai Nguyen Province, Vietnam



Tel

0208 3862 396 | 02083 862 205



Email

phutung1@futu1.com.vn

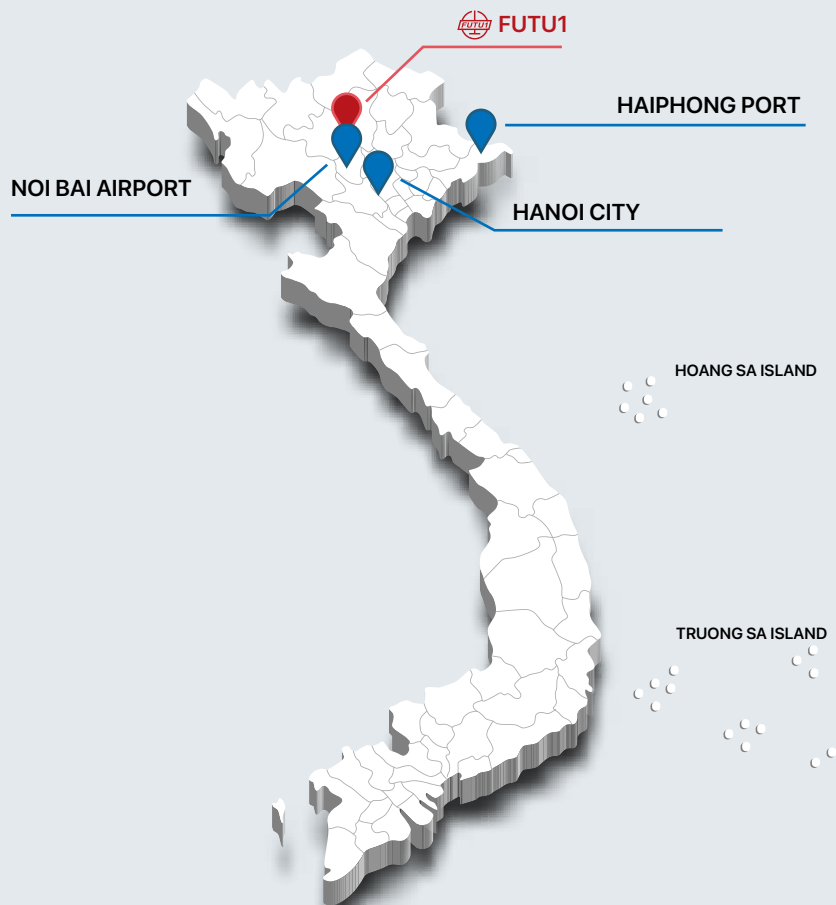


Website

www.futu1.com.vn



Location



In 1hr./40km

 DRIVING TO NOI BAI AIRPORT

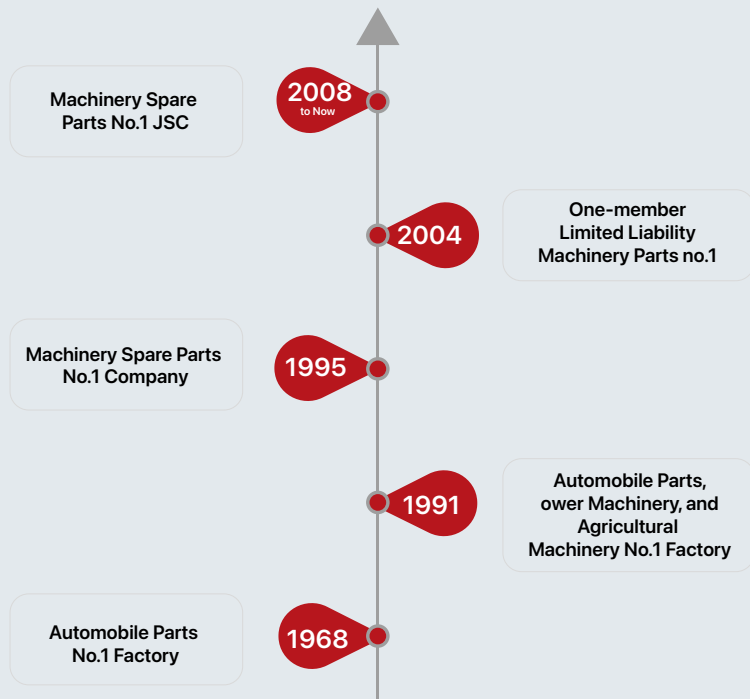
In 1hr.30min./80km

 DRIVING TO HA NOI CITY

In 2hrs./180km

 DRIVING TO HAI PHONG PORT

Development History



Core values



Vision

To become a leading enterprise in precision machining sector, setting industry standards through innovation, quality, and excellence.



Mission

To create high-quality products and services that satisfy customer requirements and expectations, harmonizing the interests of our shareholders, employees, and the community.



QUALITY



HUMAN RESOURCES



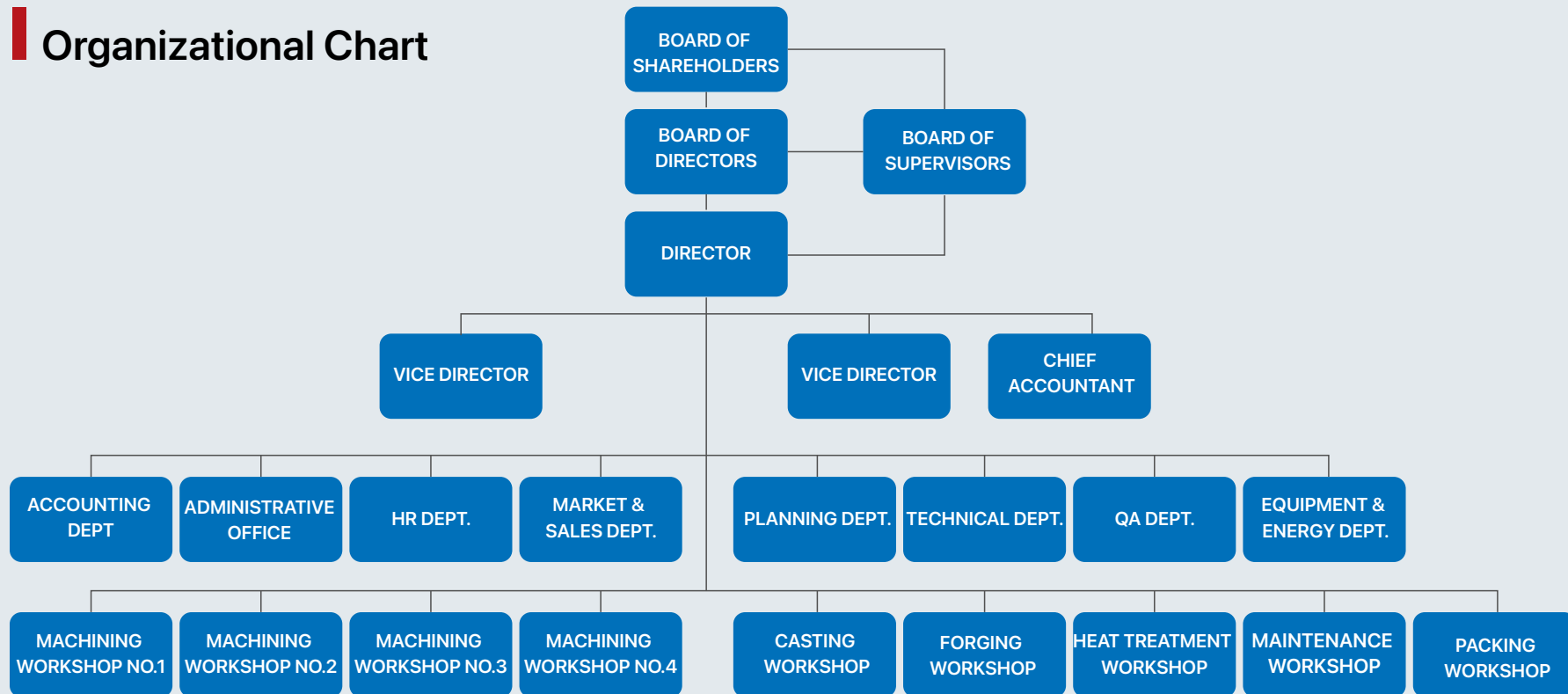
DISCIPLINE



CSR



Organizational Chart



Management system

ISO 9001:2015



IATF 16949:2016



ISO 14001:2015



ISO 45001:2018

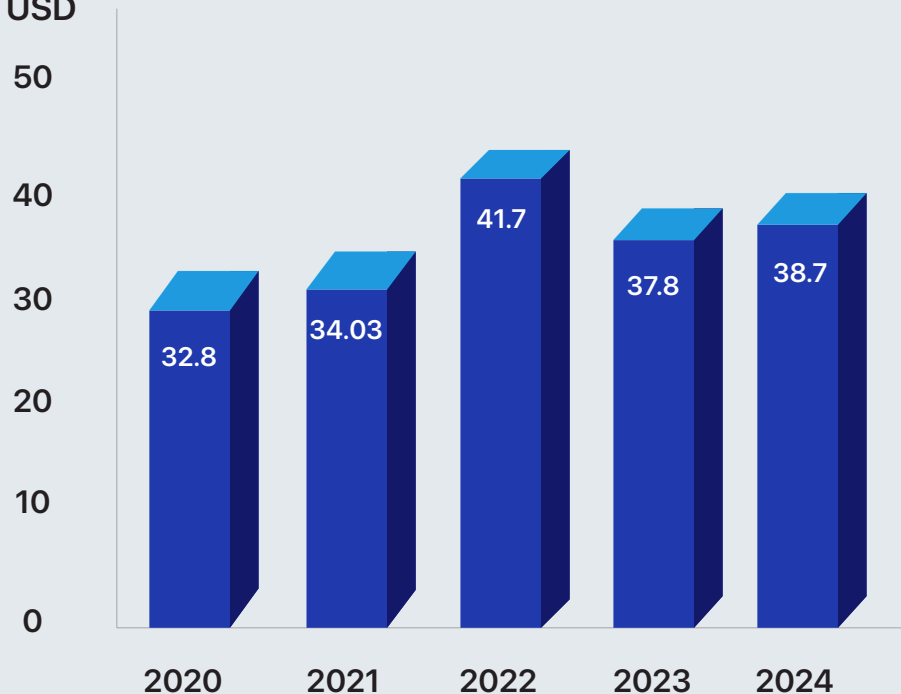


ISO 50001:2018

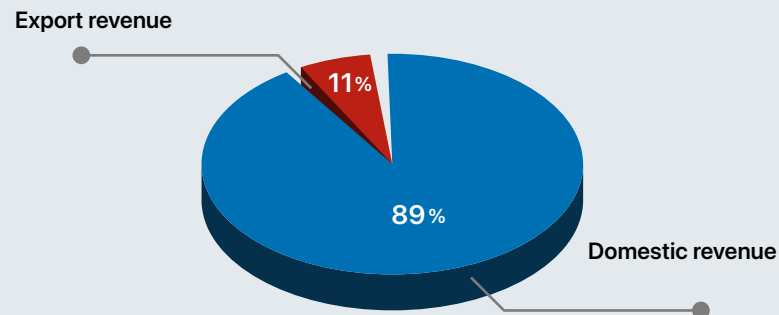


Revenue

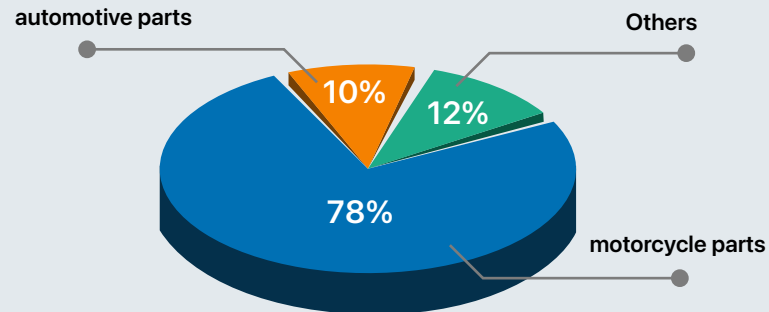
Million USD



Market share by revenue



Market share by industry revenue



Motorcycle Parts



BUSH - MATERIAL:
Material: FC150-300



DRUM GEARSHIFT
Material: FC300



GEAR STARTER DRIVEN
Material: S50C



CYLINDER SLEEVE
Material: FC300



CYLINDER SLEEVE
Material: FC300



**ROD, CONNECTING & FORK
GEARSHIFT**
Material: SCM420H



DRUM BRAKE
Material: FC150-200



REAR SPROCKET
Material: S45C.



FRONT SPROCKET
Material: SCR420.



SPROCKET CAM
Material: JSC270C



SPROCKET TIMING
Material: SCM420H



REAR WHEEL HUB
Material: SCM420H



**FIX COUPLING OF
DUMPER**
Material: FC250



**SPEED GEAR SELECTOR
SHAFT ASSY**
Material: SCM420



FINAL REDUCTION GEARS NO.1
Material: SCM420
Accuracy grade: 7



FINAL REDUCTION GEARS NO.2
Material: SCM420
Accuracy grade: 7



ROCKER ARM
Material: SCM420H



Automotive parts

BRACKET

Material: FCD450-700.



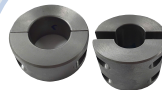
BEADED-HOSE-FITTING

Material: S45C



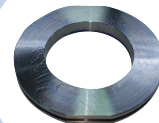
COUNTER_WEIGHT_ASSY_ SUCTION_LINE

Material: S45C



BEARING HOUSING

Material: S45C



CONE - INLET

Material: HAI
MS 131- 51



MOTOR SHAFT

Material: SCM420



TRUCK SUSPENSION PARTS

Material: FCD500



FRONT HOUSING

Material: FC250.



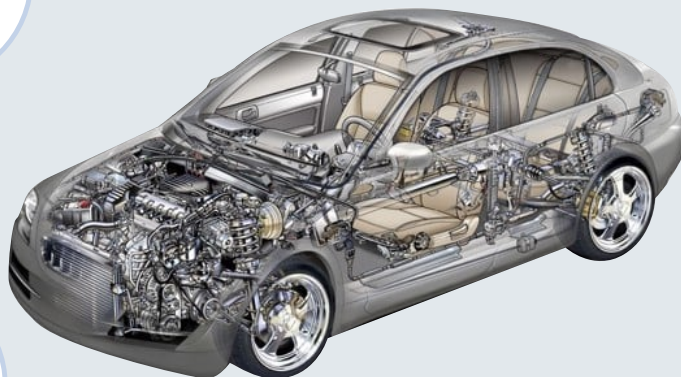
LINER

Material: FC250.

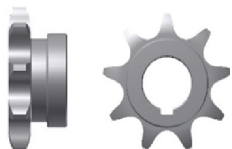


SUPPORT, ALTERNATOR

Material: FCD500



Other mechanical parts



Sprocket :

Material: S45C, SCM, SCr
Accuracy grade: 9.



Bearing Housing

Material: FC, FCD



Gear

Material: S45C, SCM, SCr
Accuracy grade: DIN 5



Motor shaft

Material: S45C, SCM, SCr
Accuracy grade: 0.003



Shaft

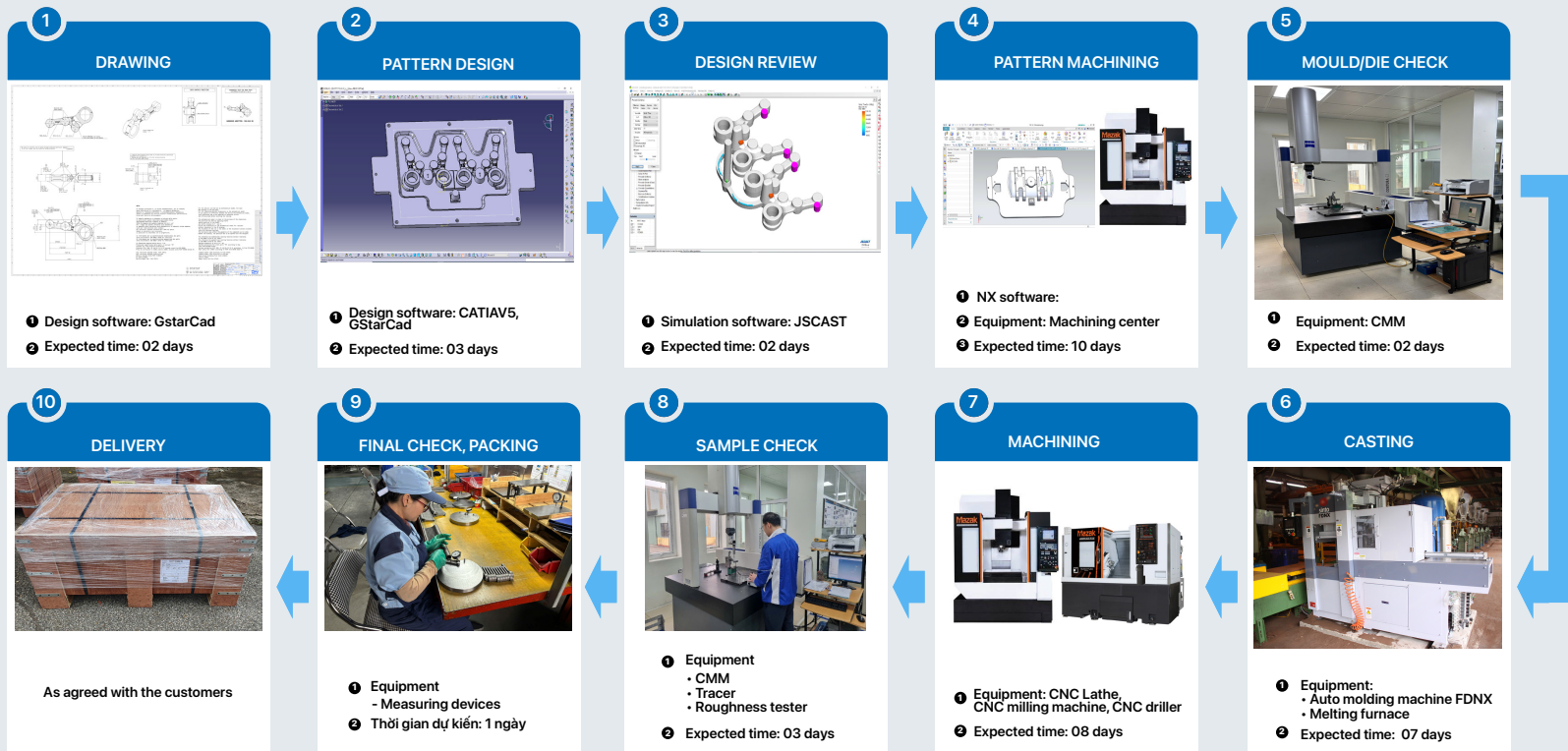
Material: SCM420.



Connecting Bracket

Material: FC150~250.

Iron casting parts



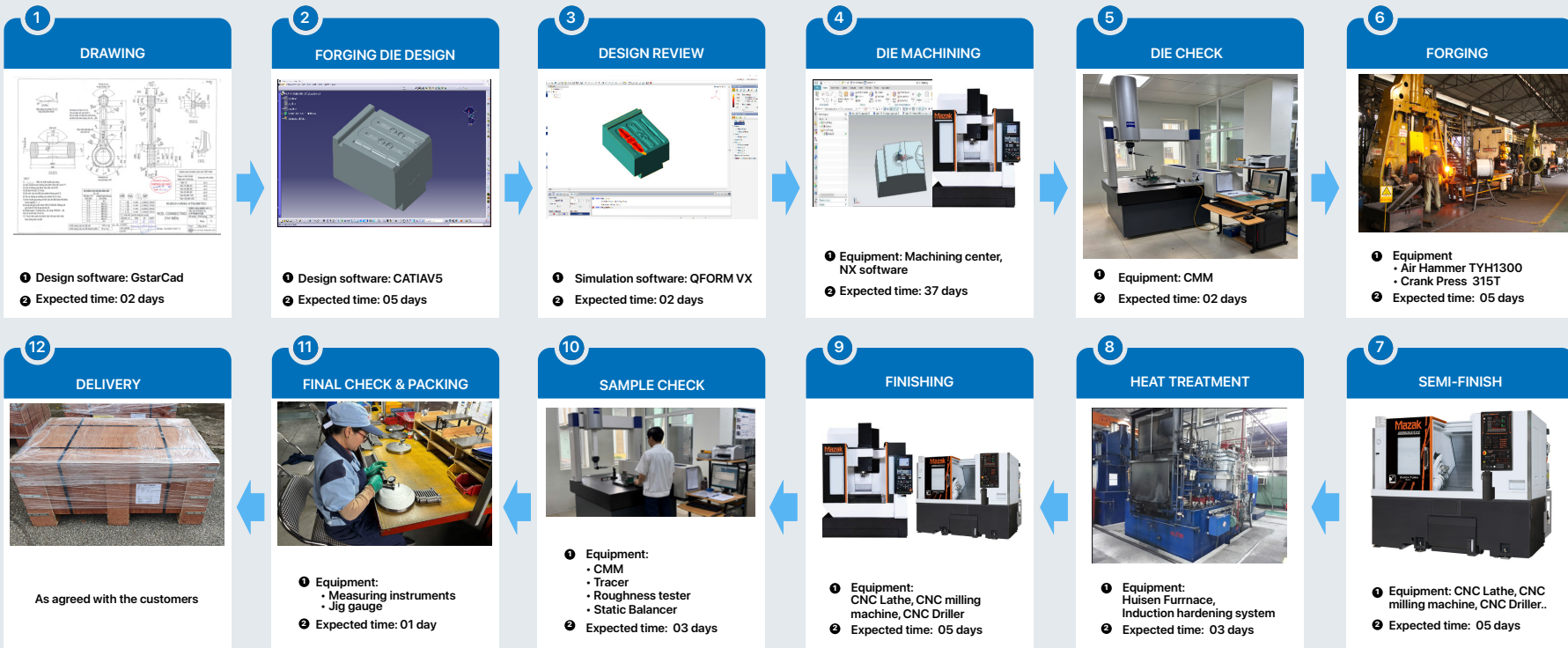
LEAD
TIME

38
Days

LEAD TIME

70 DAYS

Steel parts



CASTING LINE



• Capacity

7.200
Tons/year

• Material

Grey iron
FC150-350

Ductile iron
FCD400-700

• Weight

MAX 20 KG

Equipment List

NAME	Q'TY
• GREEN SAND RECYCLING SYSTEM	02
• MANUAL MOLDING MACHINE	29
• AUTOMATIC MOLDING MACHINE	03
• MELTING FURNACE	06
• SAND MIXING MACHINE	04



CONNECTING BRACKET



AUTOMOTIVE &
MOTORCYCLE PARTS



BEARING HOUSING

Hot forging and fine blanking line



• Capacity

6.500

Tons/year

• Material

SCM415-440

SCR420-440

S25C-S50C

• Weight

MAX 3.0 KG

EQUIPMENT LIST

NAME	Q'TY
• FINE BLANKING MACHINE	02
• HYDRAULIC PRESS	08
• AIR HAMMER	04
• PRESS	32
• AUTOMATIC FEEDING SYSTEM	03
• ELETRIC HEATING FURNACE	07



CON, ROD &
FORK GEARSHIFT



ROCKER ARM



FINAL REDUCTION GEARS



SPROCKET CAM

Machining line



- Capacity
- Accuracy grade
- Shaft length (max.)

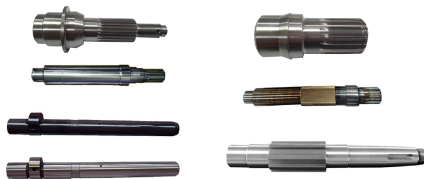
14.000 tons/year
(~40.000.000 pcs/year)

DIN 5

650mm

Equipment List

Name	Q'TY
• NC, CNC Lathe	162
• CNC driller, CNC milling machine	20
• CNC gear hobbing machine	07
• CNC gear shaving machine	01
• Gear grinding machine	01
• Broaching machine	05
• CNC external grinder	08



Shaft

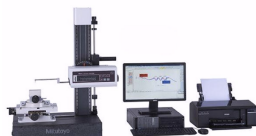


Gear

Measuring devices



CMM



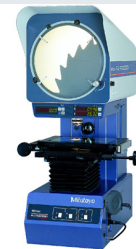
TRACER



ROUGHNESS TESTER



TESTER FOR ROUNDNESS
& CYLINDRICITY



PROJECTOR



TESTER FOR
BRINELL HARDNESS



TESTER FOR
ROCKWELL HARDNESS



TESTER FOR
TENSILE STRENGTH



SPECTROMETER



TOOTH PROFILE
MEASURING MACHINE



MICROSTRUCTURE
MICROSCOPE



ULTRASONIC
ELAW DETECTOR

Hot forging



NO.	MAIN TECHNICAL INDICATORS
1	Air hammer: Newmax 55E TYH13-- (Force: 1300kg max.)
2	Material S15C~S50C, SCM415~SCM440, SCr420~SCr440,
3	Mass/weight: Max 3.0kg

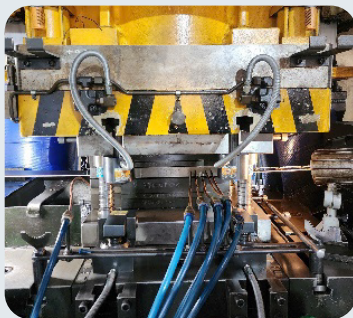


ROD, CONNECTING

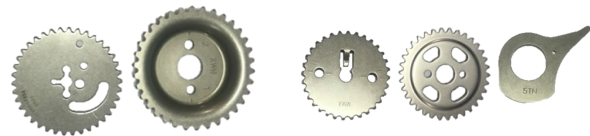


FORK, GEARSHIFT

Fine Blanking

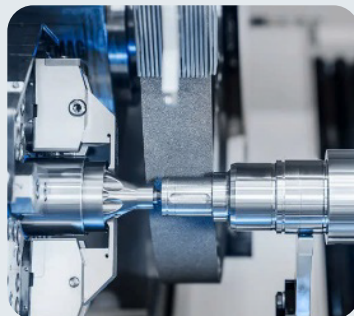


NO.	MAIN TECHNICAL INDICATORS
1	Fine blanking machine: FB1-220
2	Force: 220T max.
3	Accuracy grade: 8
4	Material: SPCC, JSC270C, SPFH590,
5	Blank specification: 300 x 300 x 6mm max.



TYPICAL PRODUCTS

Shaft machining

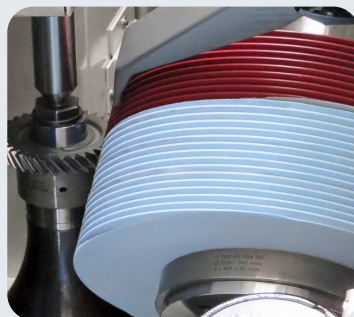
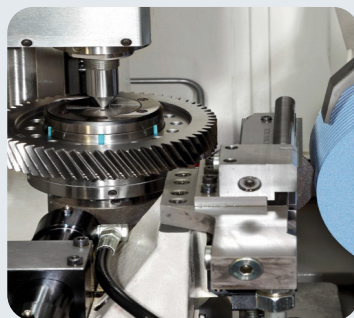


NO.	MAIN TECHNICAL INDICATORS
1	CNC grinder: Shigiya (Japan)
2	Controller: Fanuc
3	Centering distance: 750mm max.
4	Grinding diameter: 300mm max.
5	Accuracy grade: 0.003
6	Material: SCM415-440, SCr420-440, S25~S50C, ...



SHAFT

Gear grinding machine



NO.	MAIN TECHNICAL INDICATORS	MAIN TECHNICAL
1	Maximum Workpiece Diameter	320 mm
2	Maximum Workpiece Modulus	8 mm
3	Gear Precision level	Grade 5
4	Maximum Installation diameter, Bore diameter, Length of grinding wheel	Φ300×Φ115×160
5	Maximum Grinding Wheel Speed (B-axis)	7800 rpm
6	Maximum Table Speed (C-axis)	1000 rpm



FINAL REDUCTION GEARS



YAMAHA



YAMAZAKI



HITACHI
Inspire the Next
Astemo



THACO INDUSTRIES



YAHATA VIETNAM

KDH



YAMAGUCHI
Vietnam

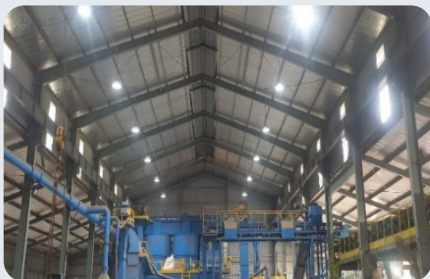
Environment and CSR



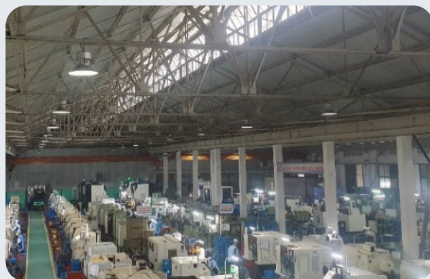
- Planting trees is a contribution to environmental protection



- Technology improvement and investment in modern equipment



- LED bulbs are used to replace halogen ones



- Participating in community activities



Human resources



- Installing dust collectors, oil mist extractors, and improving working conditions for employees



- Resting areas for employees are appropriate designated



- Organizing regular training courses for the management team



- Organizing tours and vacation activities for employees



- Organizing sports activities for employees



- Organizing periodic medical check-ups for employees

FUTU1

*Thank you so much
for your kind attention*



www.futu1.com.vn